

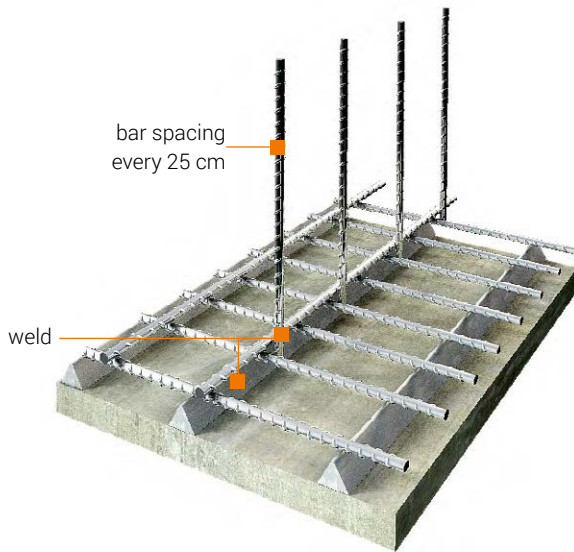
General recommendations:

- During the installation observe the compulsory security standards - wear protective gloves and work clothes with long sleeves.
- During transport and storage, protect against mechanical damage.
- Above 90 cm stays made with rebars are needed.
- Up to 30 cm Formax 1000 is self-supported.

SELF - SUPPORTED < H = 30 - 90

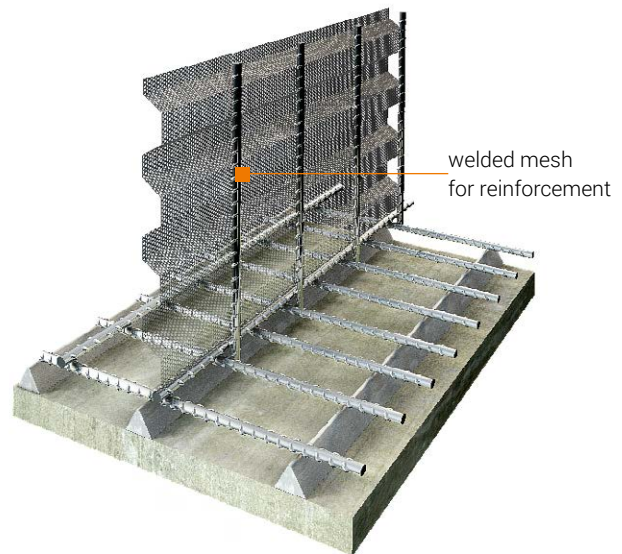
STEP 1

Installation of reinforcing mesh.



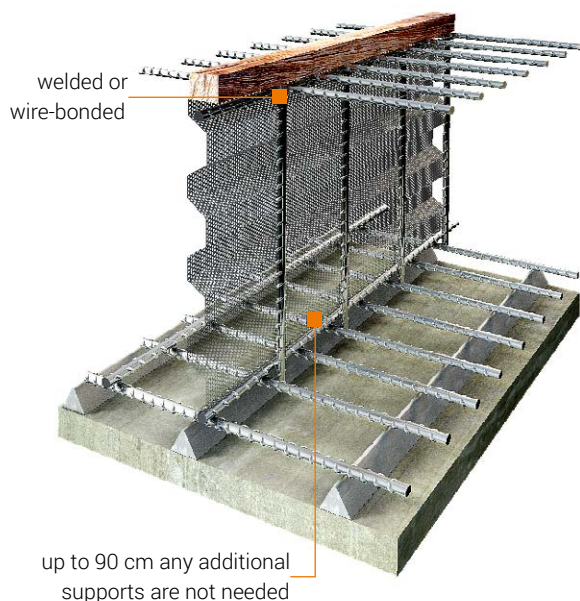
STEP 2

Installation of Formax 1000 to reinforcing mesh.



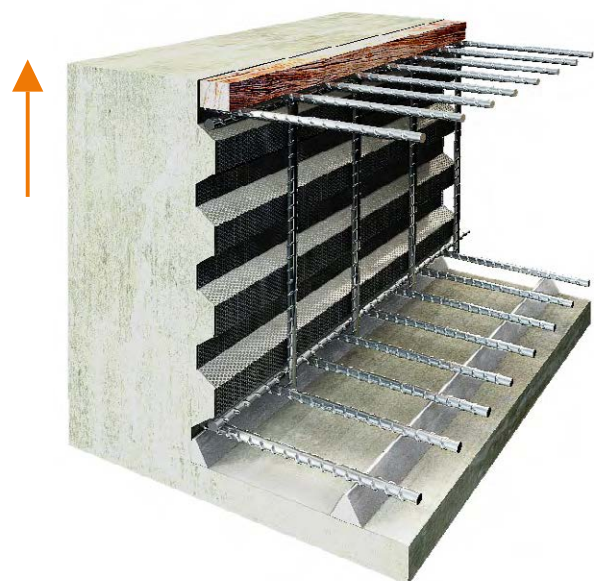
STEP 3

Upper reinforcement installation and welding to vertical bars. Adding a wooden beam.



STEP 4

Concreting - to do with pressure on the bars.



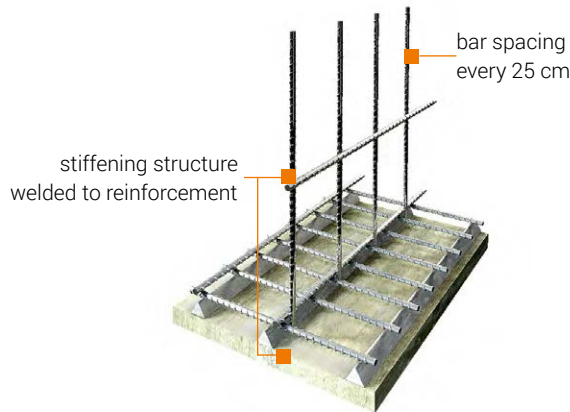
General recommendations:

- During the installation observe the compulsory security standards - wear protective gloves and work clothes with long sleeves.
- During transport and storage, protect against mechanical damage.
- Above 90 cm stays made with rebars are needed.

STAYS < H > 90 CM

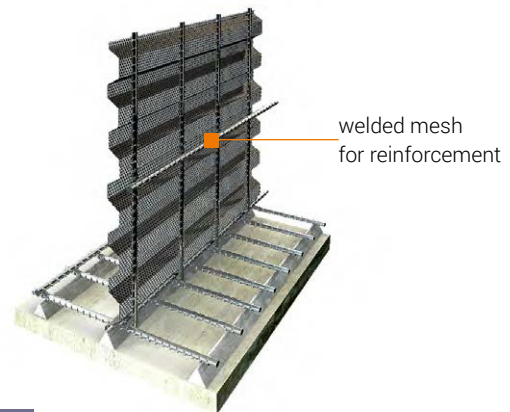
STEP 1

Installation of reinforcing mesh.



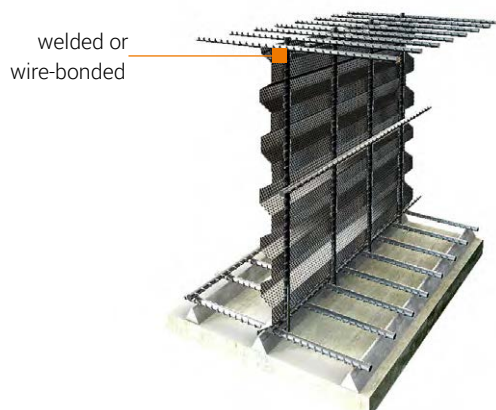
STEP 2

Installation of Formax 1000 to reinforcing mesh.



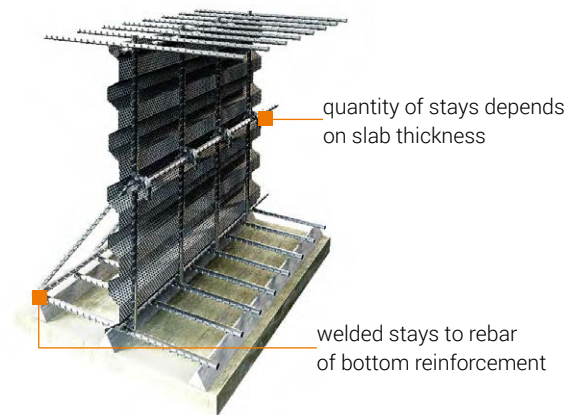
STEP 3

Upper reinforcement installation and welding to vertical bars.



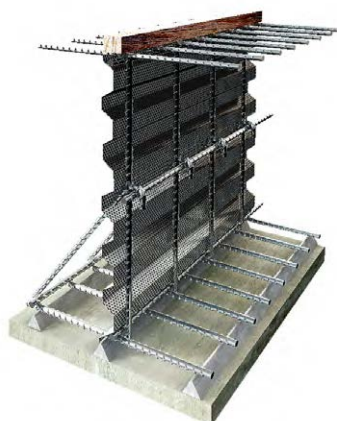
STEP 4

Installation of stays or supports..



STEP 5

Adding a wooden beam.



STEP 6

Concreting - to do with pressure on the bars.

