

RECASTAL® RSH Special

2024.02_01_EN

				
Type SG	Type SKG	Type SKB	Type S2G	Type SKG-v
				
Type SRG	Type SKB-v	Type S2v	Type S2G-v	Type SB
				
Type SWQ	Type SHQ	Type SWv	Type S2H	Type SK2H
				
Type SKR	Type BITUM	Type ACTIV		

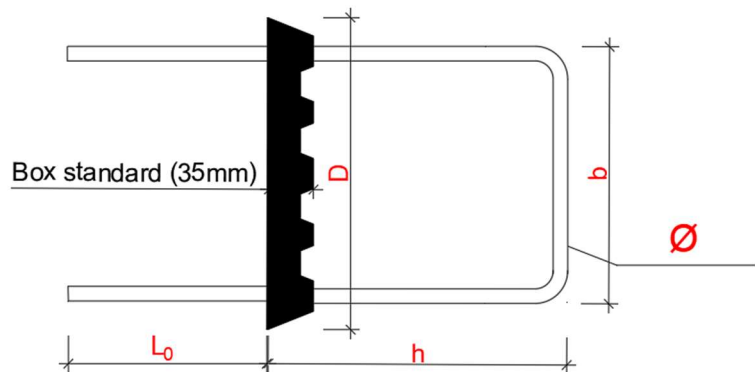
RECASTAL® RSH Special are pre-bent reinforcement in a galvanized trapezoidal casing compliant with Eurocode 2. They ensure quick and safe horizontal continuity of reinforcement between two structural elements with superior shear force transfer. With a variety of bar shapes in both single and double row arrangements, RECASTAL® RSH Special are intended to suit any other case that our standard RECASTAL® RSH, RSV or VHQ cannot cover.

Main Characteristics

- Standard length: 1.25 m (on request up to 2.2 m)
- Trapezoidal profile according to Eurocode 2
- Fast Installation
- Bitumen (BITUM) and Bentonite (ACTIV) versions available
- Types and sizes on request
- Reinforcement steel B500B, B500B-FI, CARES, B500C, B500SP, B550B

Technical Data

- Material: Galvanized steel sheet
- Sheet thickness: 0,5 mm
- Unit length: 125 cm
- Packaging: packed on pallets, shrink wrapped
- Φ (bar diameter) = 8 – 16 mm
- b (bar width) = 6 – 30 cm
- s (spacing) = 10 – 30 cm
- D (box width) = 8 – 32 cm
- L_0 (lap length) = 11 – 65 cm
- v (vertical bend length) = 6 – 100 cm
- 5 Bar of water pressure resistance for ACTIV and BITUM
- Storage: no limitation



*In order to accurately assess whether a combination of width, spacing and diameter is available, please contact the technical department

Installation

Fix the RECOSTAL® RSH Special to the formwork or reinforcement before concreting using nails or tie wire. Once the initial pour sets, remove the cover to expose the rebar and prepare them for straightening. Using a bending pipe, bend the bars so that it overlaps with the main reinforcement before the second stage of concreting. During the subsequent pour, the front of the RECOSTAL® RSH Special remains embedded in the wall, serving as a key joint that enhances the strength of the connection.

Approvals

- CARES
- ITB – KOT for RSH and waterproofing
- KIWA/BY
- MFPA for RSH ACTIV waterproofing

Related Products

- RECOSTAL® RSH
- RECOSTAL® RSV
- RECOSTAL® VHQ

Safety/ Recommendations*

Wear protective gloves

*The recommendations relating to the application and end-use of our products are based on our current knowledge and experience of the products when properly stored, handled and applied under normal conditions. No warranty in respect of merchantability or of fitness for a particular purpose, nor any liability arising out of any legal relationship whatsoever, can be inferred either from this information, or from any other advice offered. The user shall rely on his or her own information and tests to determine suitability of the product for the intended use. We reserve the right to update information due to technical progress.