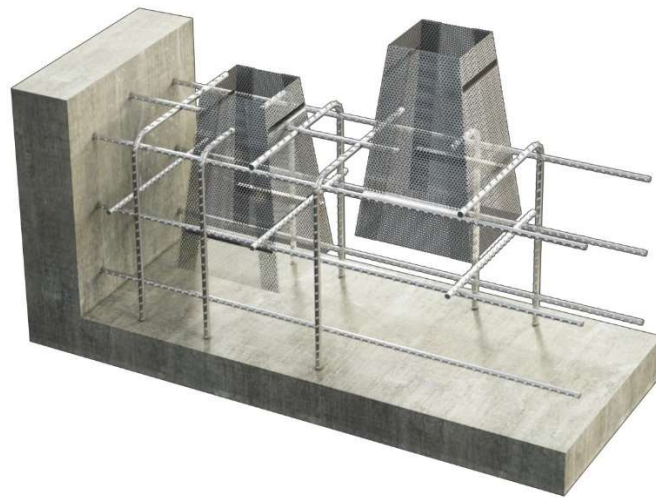


RECOSTAL® Sbox

2024.02_01_EN



RECOSTAL® Sbox are made for easily adding openings in buildings and structures. They form a strong bond with concrete and can come in different shapes and groups of openings. If needed, RECOSTAL® Sbox can be produced with fixing brackets for easier installation. There is no need for stripping, and they can also be made from expanded metal.

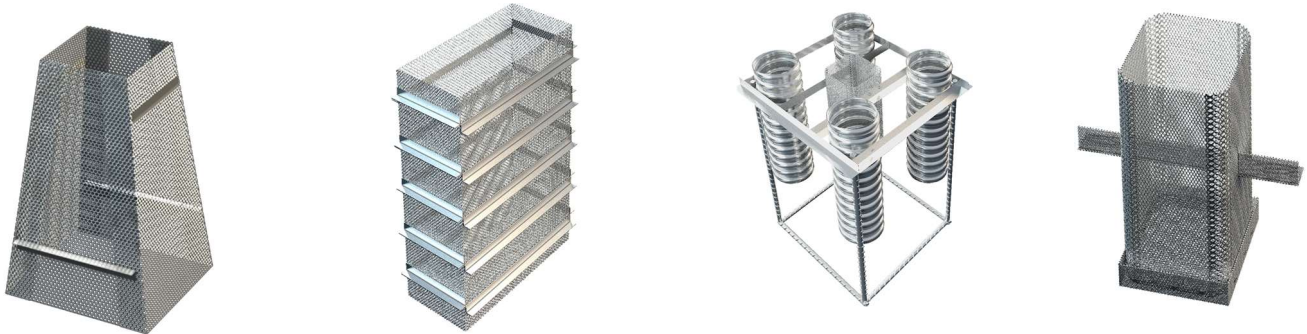
Main Characteristics

- Strong bond with concrete
- Many shape variants possible
- With fixing brackets on request
- No stripping required
- RECOSTAL® Sbox CM – Corrugated metal sheet
- RECOSTAL® Sbox SM – Smooth metal mesh
- RECOSTAL® Sbox TM – Trapezoidal metal mesh
- Round corner ($r = 4 \text{ cm}$), sharp edge corners or round shapes

Technical Data

- Material: Galvanized steel sheet, black steel mesh
- Sheet thickness: 0.7, 1.0, 1.5 mm
- Packaging: packed on pallets, shrink wrapped
- Box dimensions : Height, width/diameter and length by order
- Storage: no limitation

Examples of RECOSTAL® Sbox shapes



Installation

Secure the RECOSTAL® Sbox between the reinforcement or to the reinforcement layer. Fix with fixing brackets directly to the blinding layer or the formwork. RECOSTAL® Sbox is self-supporting in most dimensions and installation situations. Depending on the concrete pressure, on-site support must be provided.

Related Products

- RECOSTAL® Box
- RECOSTAL® SF
- RECOSTAL® Foundation Formwork type FS, ES, and ET

Safety/ Recommendations*

Wear protective gloves

*The recommendations relating to the application and end-use of our products are based on our current knowledge and experience of the products when properly stored, handled and applied under normal conditions. No warranty in respect of merchantability or of fitness for a particular purpose, nor any liability arising out of any legal relationship whatsoever, can be inferred either from this information, or from any other advice offered. The user shall rely on his or her own information and tests to determine suitability of the product for the intended use. We reserve the right to update information due to technical progress.