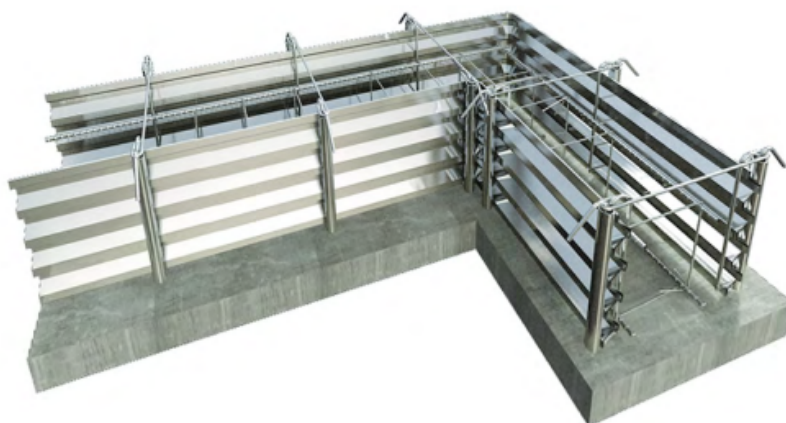


RECOSTAL® FOUNDATION FORMWORK

2024.02_01_EN



RECOSTAL® FOUNDATION FORMWORK is a complete assembly system with key profiled shuttering units. The accessories support the system and enable the unobstructed installation of the reinforcement. The formwork is self-supporting up to a height of $H=1,0$ m. The distance of the accessories is always $\leq 1,0$ m. The tube diameter varies depend on the height of foundations.

There are three types of RECOSTAL® FOUNDATION FORMWORK: **ES, FS, ET**.

Self-supporting foundation formwork **type FS and ES** as complete assembly system with trapezoidal profiled formwork units. All parts are precision-made and pre-fabricated according to the layout plan. Due to the form ties and formbraces (accessories) provided with the formwork units, the system is self-supporting up to a formwork height of $H=1,0$ m. Foundation formwork **type ET** as an assembly system with trapezoidal profiled formwork units. All parts are precision-made and pre-fabricated according to the layout plan. Overlaps are fixed with hexagon head screws, which are included in the delivery. In order to withstand concrete pressure, the units are supported on site by placing backfill material.

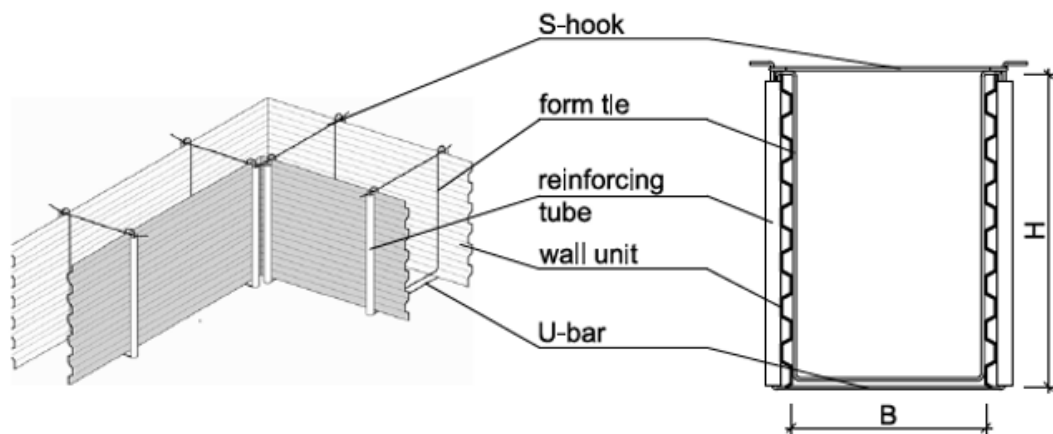
Main Characteristics

- Self-supporting up to 100 cm
- Key profiled metal sheet with / without accessories
- Corner units and other special shapes are produced to the project
- Fast installation
- Highly time-efficient
- Installation without a crane
- Stable structure

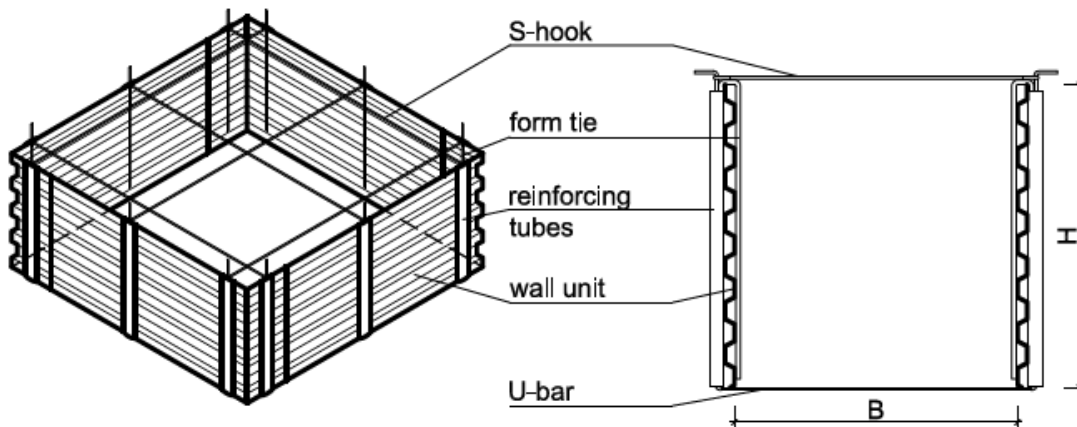
Technical Data

- Material: galvanized metal sheet, accessories
FS type: smooth bars Ø8 mm
ES type: rebars Ø8 mm and Ø10 mm / smooth bars Ø8 mm depending on dimensions
- Thickness: standard 0,7 mm
- Tubes (KR):
Ø50x2 mm up to 100 cm
Ø40x1,5 mm up to 70 cm
Ø30x1,5 mm up to 50 cm
- Unit height: by order
- Unit length: 225 cm and by order
- Packaging: packed on pallets, shrink wrapped

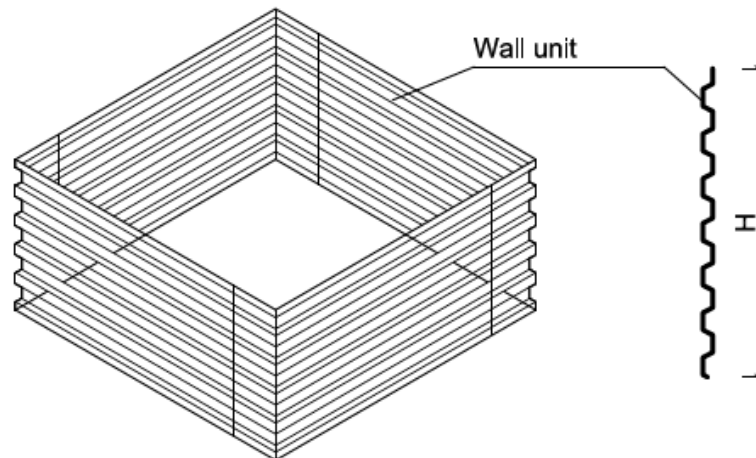
RECOSTAL® FOUNDATION FORMWORK: FS



RECOSTAL® FOUNDATION FORMWORK: ES



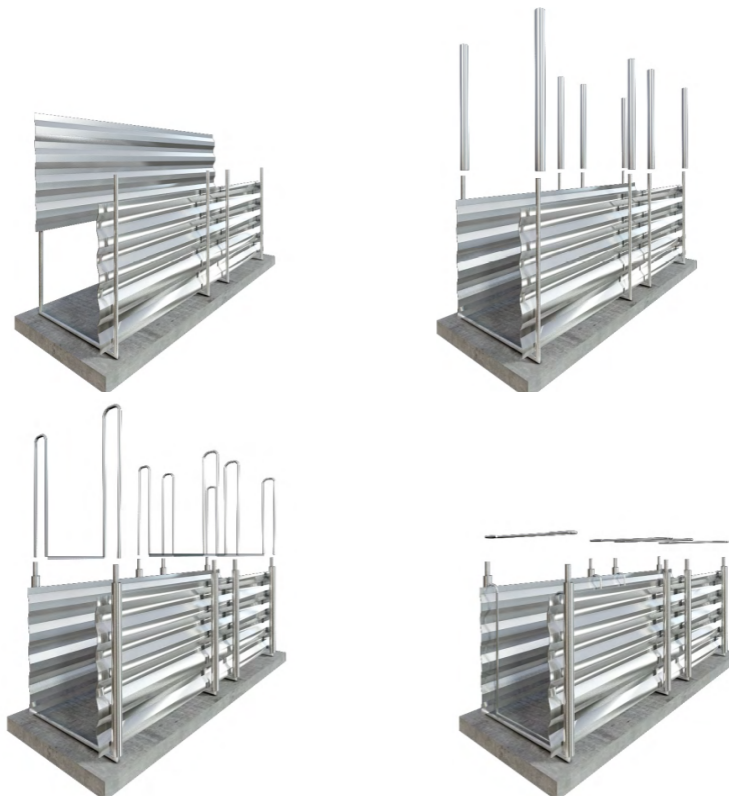
RECASTAL® FOUNDATION FORMWORK: **ET**



Installation

Set the 'U'-bars (KU) every $c/c=1,0$ m regarding the position plan of foundation on the previously prepared base. Applicate tubes (KR) on bars and set the formwork sheets. Standard overlap between metal sheets is 20 cm, can be adjusted between 15-25 cm in non-standard locations. In case of ET type, use metal screws for tight connection. Stabilize type ES and FS by special clips – in case of FS type there is one internal single 'U'-bar / form tie, in case of ES there are two clips / form ties (KP) inserted between tubes and sheets. Stabilize the width of formwork with 'S'-bar (KC) on the top. ET type does not require accessories but must be backfilled, supported or settled in the ground on site.

Installation of **FS** type:



Related Products

- RECASTAL® SPEED EDGE
- RECASTAL® BOX
- RECASTAL® S-BOX

Safety/ Recommendations*

Wear protective gloves.

*The recommendations relating to the application and end-use of our products are based on our current knowledge and experience of the products when properly stored, handled and applied under normal conditions. No warranty in respect of merchantability or of fitness for a particular purpose, nor any liability arising out of any legal relationship whatsoever, can be inferred either from this information, or from any other advice offered. The user shall rely on his or her own information and tests to determine suitability of the product for the intended use. We reserve the right to update information due to technical progress.