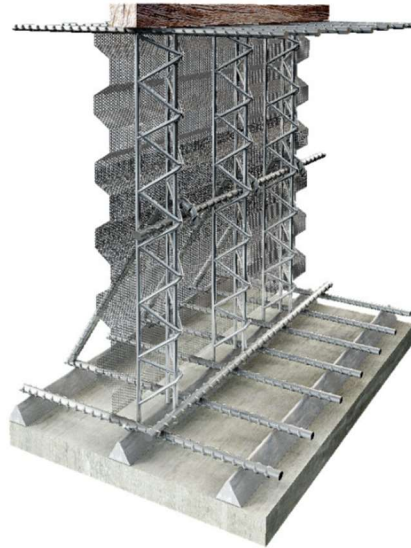


RECOSTAL® 2000 GT-Z

2024.03_01_EN



RECOSTAL® 2000 GT-Z Formwork is used for making construction joints in reinforcement structures. The load bearing structure is made of lattice girder, horizontal bars and Tie-bars.

Main Characteristics

- Fully self-supporting in all dimensions and heights above 150 cm
- Trapezoidal profile according to Eurocode 2
- No additional support is necessary
- Fast installation
- Low transport costs
- Installation without a crane
- Corner units can be manufactured to special order

Technical Data

- Material: black steel mesh
- Thickness mesh: standard 1.5 mm (available on request: 0.7 mm; 1.0 mm)
- Unit length: 225 cm
- Packaging: packed on pallets, shrink-wrapped
- Horizontal rebars: Ø 20; 25 mm
- Tie-bars: Ø 12; 16 mm
- Storage: product should be kept in rooms that are protected from moisture and precipitation. Product should be stored under the roof.



Installation

Position at the location of the designed construction joint, the following should be placed under the lower reinforcement RECOSTAL®Spacecon or concrete spacer. RECOSTAL®2000 GT-Z, lattice girder and Tie-bars should fix the reinforcement using welding. Overlap between elements is min. 5 cm. Over the top reinforcement should be installed RECOSTAL®DFS or wooden scantlings. Once concreting is complete and the concrete mix has set, remove the wooden scantlings.

Associated System Products

- RECOSTAL® Spacecon
- RECOSTAL® DFS

Related Products

- RECOSTAL® 2000
- RECOSTAL® 2000 D
- RECOSTAL® 2000 Z
- RECOSTAL® 2000 F
- RECOSTAL® 2000 GT
- RECOSTAL® 2000 GT-Z
- RECOSTAL® 2000 GTF
- RECOSTAL® 2000 GTF-Z

Safety/ Recommendations*

Wear protective gloves.

*The recommendations relating to the application and end-use of our products are based on our current knowledge and experience of the products when properly stored, handled and applied under normal conditions. No warranty in respect of merchantability or of fitness for a particular purpose, nor any liability arising out of any legal relationship whatsoever, can be inferred either from this information, or from any other advice offered. The user shall rely on his or her own information and tests to determine suitability of the product for the intended use. We reserve the right to update information due to technical progress.