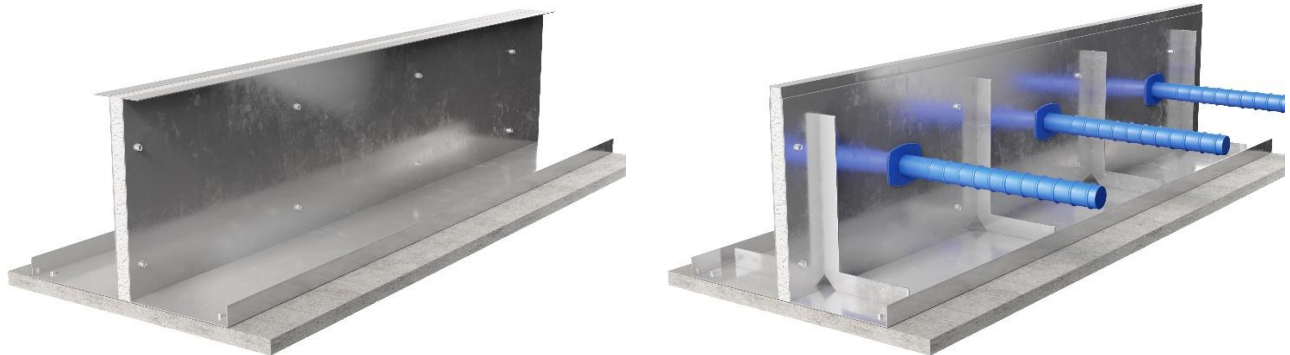


RECOSTAL® TF/RT Isolation Joint Unit

25.08.01_E



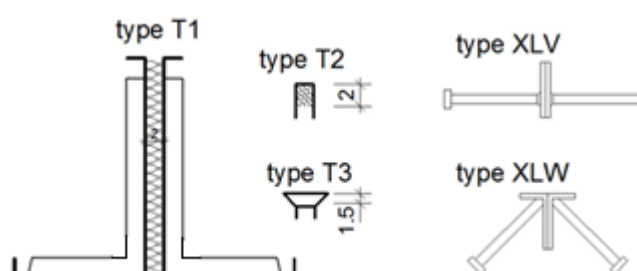
RECOSTAL® TF and RT isolation joint units are a self-supporting formwork units with bases on both sides and filler board, designed for the installation of isolation joints in concrete floor slabs.

Main Characteristics

- Option of dowel bars to withstand shear forces
- Option of removable rectangular metal cover strip, removable trapezoidal plastic cover strip or edge protection
- Simultaneous area pour possible on both sides

Technical Data

- Material: galvanized sheet steel (stainless steel on demand)
- Filler board: extruded foam board $e = 2$ cm (standard) (mineral fibre insulating material in different thicknesses)
- Types:
 - T1 – standard
 - T2 - with removable rectangular metal cover
 - T3 – with removable trapezoidal plastic cover
 - RT-XLV - with edge protection, flat steel 60/5
 - RT-XLW - with angle edge protection, angle 30/60/5
- Standard unit length: 225 cm (300 cm with edge protection)
- Installation heights: 14 to 50 cm
- Dowel bars: round steel, galvanized or stainless steel with pre-installed plastic dowel, sleeve, sizes according to specification



Installation

Place the RECOSTAL® isolation joint unit on top of the level blinding and fix with nails driven through the pre-punched holes in order to prevent the unit from moving sideways. If the units are installed on top of a mud slab or gravel, use extra long nails.

Accessories

RECOSTAL® extra long nails

Associated System Products

- RECOSTAL® TF-RTL
- RECOSTAL® TF-RTS
- RECOSTAL® TF-S1
- RECOSTAL® TF-S2
- RECOSTAL® TF-XL
- RECOSTAL® TF-TFV

Packaging

Packed on pallets and shrink wrapped. Storage no limitations.

Safety/Recommendations*

Wear protective gloves.

*The recommendations relating to the application and end-use of our products are based on our current knowledge and experience of the products when properly stored, handled and applied under normal conditions. No warranty in respect of merchantability or of fitness for a particular purpose, nor any liability arising out of any legal relationship whatsoever, can be inferred either from this information, or from any other advice offered. The user shall rely on his or her own information and tests to determine suitability of the product for the intended use. We reserve the right to update information due to technical progress.