

RECASTAL[®] RSV

2024.02_01_EN



RECASTAL[®] RSV are pre-bent reinforcement in a galvanized trapezoidal casing compliant with Eurocode 2. It ensures quick and safe vertical continuity of reinforcement between two structural elements with superior shear force transfer.

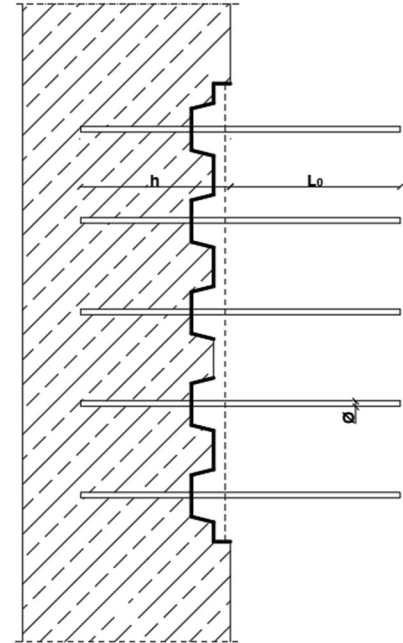
Main Characteristics

- Standard length: 1.25 m (on request up to 2.2 m)
- Trapezoidal profile according to Eurocode 2
- Fast Installation
- Special types and sizes on request
- Reinforcement steel B500B, B500B-FI, B500C, B500SP, B550B

Technical Data

- Material: Galvanized steel sheet
- Sheet thickness: 0,5 mm
- Unit length: 125 cm
- Packaging: packed on pallets, shrink wrapped
- Φ (bar diameter) = 8 – 12 mm
- b (bar width) = 8 – 18 cm
- s (spacing) = 15 cm, 30 cm
- D (box width) = 11 – 21 cm
- Storage: no limitation

*To accurately assess whether a combination of width, spacing and diameter is available, please contact the technical department



Installation

Fix the RECOSTAL[®] RSV to the formwork or reinforcement before concreting using nails or tie wire. Once the initial pour sets, remove the cover to expose the rebar and prepare them for straightening. Using a bending pipe, bend the bars so that it overlaps with the main reinforcement before the second stage of concreting. During the subsequent pour, the front of the RECOSTAL[®] RSV remains embedded in the wall, serving as a key joint that enhances the strength of the connection.

Approvals

- ITB – KOT
- KIWA - BY

Related Products

- RECOSTAL[®] RSH Special
- RECOSTAL[®] RSH
- RECOSTAL[®] VHQ

Safety/ Recommendations*

Wear protective gloves

*The recommendations relating to the application and end-use of our products are based on our current knowledge and experience of the products when properly stored, handled and applied under normal conditions. No warranty in respect of merchantability or of fitness for a particular purpose, nor any liability arising out of any legal relationship whatsoever, can be inferred either from this information, or from any other advice offered. The user shall rely on his or her own information and tests to determine suitability of the product for the intended use. We reserve the right to update information due to technical progress.