

# DYWIDAG recoMesh

Welded Mesh Formwork System

# DYWIDAG recoMesh

Increased efficiency on your construction projects with DYWIDAG recoMesh permanent formwork.

Ideal for ground beams, pile caps, and bases, this innovative solution is not just a choice but a smart investment towards better building practices.

### Superior quality product

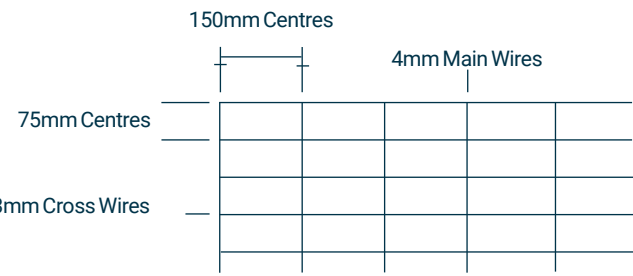
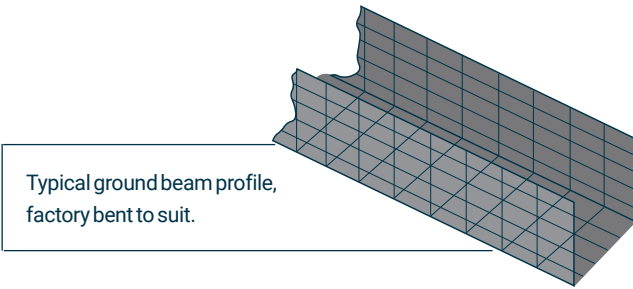
DYWIDAG recoMesh is made from bright drawn, 100% mild steel mesh. Adhering strictly to BS 4482 standards, the mesh features robust 4mm main wires spaced at 150mm, and 3mm cross wires at 75mm intervals, welded at every junction to ensure unmatched durability and compliance with BS EN ISO 9001:2015. With a light yet sturdy construction of 1.6kgs/m², it's designed for easy handling and efficiency on-site.

To further enhance its performance, the steel mesh is encapsulated with two layers of heat-shrunk polyethylene.

Each layer is 100-micron, 40% Polyethylene film, heat-shrunk to perfection on both sides, adding a mere 0.2 kg/m² to its weight.

This protective film is not only non-toxic, safeguarding groundwater from contamination, but also robust against any concrete pressure.

Extensively tested by independent experts, it guarantees that your construction elements are protected, ensuring longevity and structural integrity.



### Tailor-made for your project

DYWIDAG recoMesh is not just a product; it's a solution designed around your specific construction needs.

Manufactured in the UK with precision and care. Our comprehensive range of stock sizes ensure there are no harmful protruding sharp edges or exposed wires.

We go a step further by offering customisation options. DYWIDAG recoMesh is bent to fit the unique requirements of your project, delivering a product that's ready for immediate use upon arrival at your site.

### DYWIDAG recoMesh stock sizes

REF	WIDTH	LENGTH
0450-RM	450mm	2400mm
0525-RM	525mm	2400mm
0600-RM	600mm	2400mm
0675-RM	675mm	2400mm
0750-RM	750mm	2400mm
0825-RM	825mm	2400mm
0900-RM	900mm	2400mm
1050-RM	1050mm	2400mm
1200-RM	1200mm	2400mm
1350-RM	1350mm	2400mm
1425-RM	1425mm	2400mm
1500-RM	1500mm	2400mm
1575-RM	1575mm	2400mm
1650-RM	1650mm	2400mm
1725-RM	1725mm	2400mm
1800-RM	1800mm	2400mm
1875-RM	1875mm	2400mm
1950-RM	1950mm	2400mm
2100-RM	2100mm	2400mm
2250-RM	2250mm	2400mm
2400-RM	2400mm	2400mm
2700-RM	2700mm	2400mm

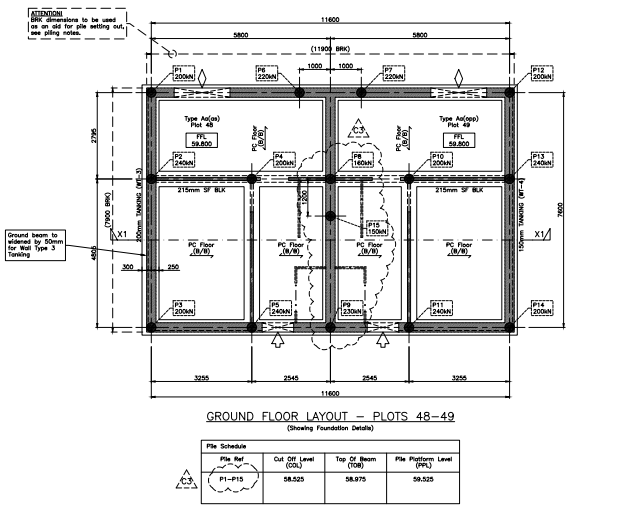
### Streamlined installation with pre-bent DYWIDAG recoMesh units

Each pre-bent DYWIDAG recoMesh unit is precisely marked to align with detailed schedules, ensuring a straightforward and efficient assembly process on site.

Assembly is as simple as joining the individual components with tying wire, making the process both quick and efficient.

If adjustments are needed, modifications can be easily made on-site: the film can be cut with a pocket knife, and the steel mesh can be trimmed using bolt cutters. Thus removing the need for skilled labour.

Despite its durability, DYWIDAG recoMesh is designed to be lightweight, facilitating manual installation without the need for heavy machinery. This balance of sturdiness and lightness underscores the product's user-friendly nature.

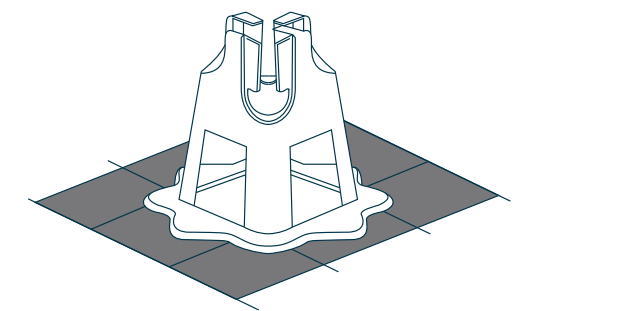


GROUND BEAM LAYOUT FOR TAKE OFF

### Optimised for stability and protection

To ensure maximum performance and durability, we recommend using plastic clip-on grade plate spacers with DYWIDAG recoMesh.

These spacers, with their large base, are designed to rest securely on two wires of the mesh, preventing any compromise to the protective film or loss of cover to reinforcement. Thus insuring the integrity of the structure.



SPECIAL GRADE PLATE 'GRIP-ON' SPACER

### Why choose DYWIDAG recoMesh?

- Simplified installation: Pre-marked units streamline the building process, making installation swift and cost-effective.
- Cost Savings: Eliminates the necessity for overdigging and decreases excessive concrete demands. When used for ground beams, it eliminates the need for concrete blinding.
- Customisation: Adapted to meet specific project requirements, recoMesh delivers accuracy and excellence in every application.

DYWIDAG - recoMesh TakeOff Sheet										Date	
CUSTOMER						Quote Ref.					
PROJECT NAME											
LOCATION						Sheet No.					
Reference	Mark	Total	Width	Length	Shape Code	Dim. A	Dim. B	Dim. C	Dim. D	Dim. E	
INSTALLATION DETAILS											
Description:											
Quantity:											
Reference	Mark	Total	Width	Length	Shape Code	Dim. A	Dim. B	Dim. C	Dim. D	Dim. E	
INSTALLATION DETAILS											
Description:											
Quantity:											

INSTALLATION DESIGN SHEET



RECOMESH GROUND BEAM FORMWORK

# Complementary DYWIDAG Concrete Technologies products:



## RECOSTAL® Speed Edge

RECOSTAL® Speed Edge Formwork is an innovative solution made of galvanised steel sheets used for base slabs and floor slabs.

### Key Benefits

- Stand-alone support: Self-supports to 500mm cutting down on extra support needs.
- Cost-effective: Saves on excavation and speeds up assembly.
- Easy corner shaping: Bends into corners easily, no extra tools needed.
- Complex slab friendly: Simplifies forming intricate designs.
- No crane needed: Manually installable, avoiding crane dependency.



## RECOSTAL® Foundation Formwork

RECOSTAL® Foundation formwork is a complete assembly system with key profiled shuttering units. The accessories support the system and enable the unobstructed installation of the reinforcement.

### Key Benefits

- Self-supporting: Up to 1000mm without extra supports.
- Saves time: Speeds up construction significantly.
- No separate pour: Simplifies concrete work.
- Manual install: Eliminates crane use.
- Stay-in-place: No need to move form.



## RECOSTAL® Shuttering Strips

RECOSTAL® Shuttering Strips are coiled formwork units designed to install openings in structural and civil engineering.

### Key Benefits

- Strong concrete adhesion: Ensures a durable bond.
- Customisable sizes: Pre-punched profiling every 50mm allows for versatile sizing.
- Simplified bending: Facilitates easy vertical adjustments.
- Shape flexibility: Accommodates a variety of designs.



[concrete.dywidag.com](https://concrete.dywidag.com)

04495-1-UK Recomesh Product Guide-02/2024

## Get in touch.

For local contact details,  
please visit our website.



© Copyright 2024 DYWIDAG. All rights reserved.  
Specifications subject to change without notice.

[dywidag.com/contact](https://dywidag.com/contact)